

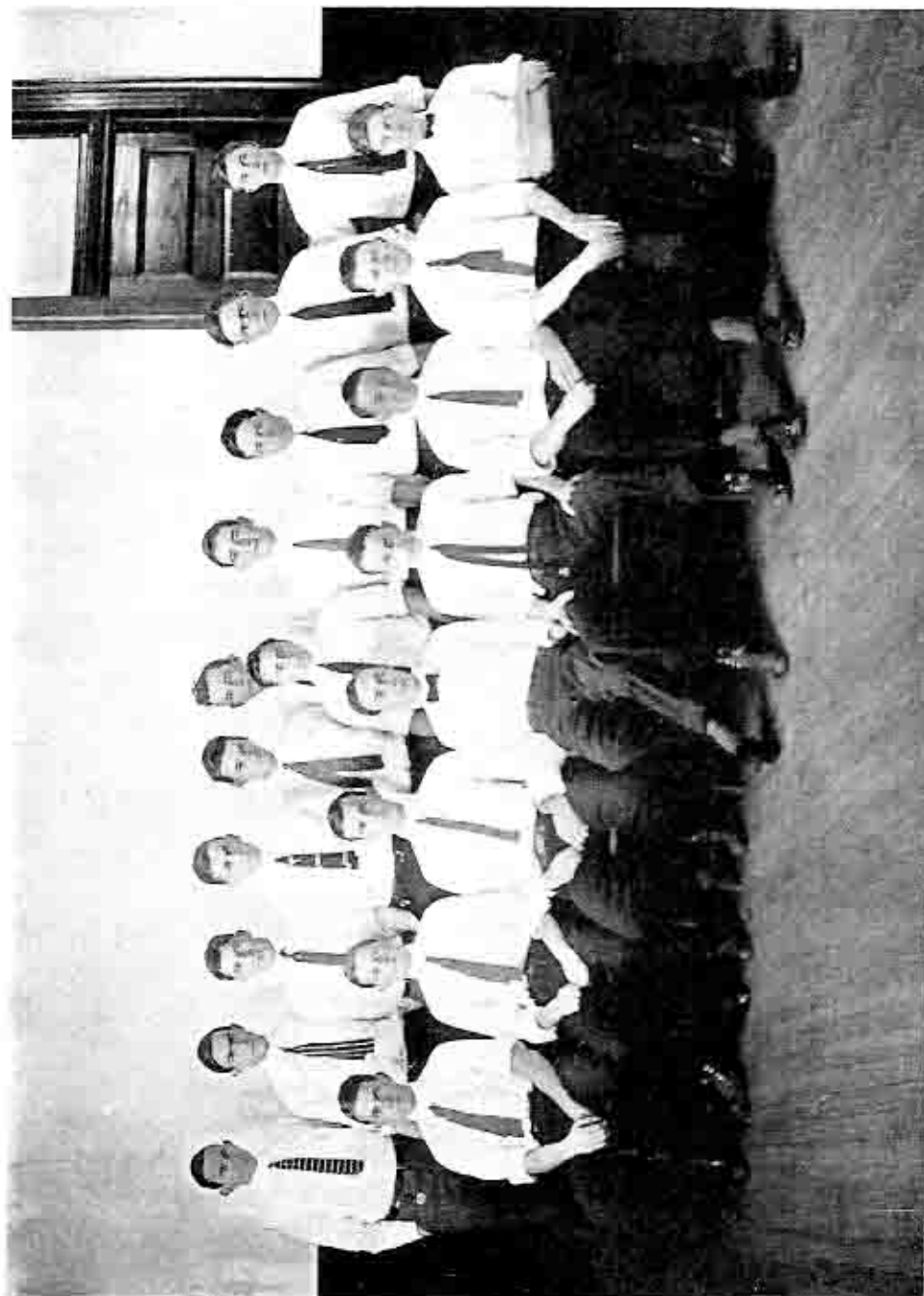


## THE SKULLS

(Established by the Theta Nu Epsilon Fraternity at the University of Alabama,  
February 14, 1909.)

A. H. ALSTON,  $\Sigma N$   
FRANK ANDERSON,  $\Sigma A E$   
PELHAM ANDERSON,  $\Sigma A E$   
WILKES C. BANKS,  $\Lambda K E$   
RALPH BARROW,  $\Lambda T Q$   
P. P. BRINKMAN,  $\Lambda T Q$   
L. G. BROOKS,  $\Phi \Lambda \Theta$   
T. E. CARTER,  $\Sigma A E$   
PIARES COLEMAN, JR.,  $K \Lambda$   
B. B. COMER, JR.,  $\Phi \Lambda \Theta$   
B. B. EDWARDS,  $\Sigma N$   
CHAS. H. EYSTER,  $K \Lambda$

L. M. FINLAY,  $\Lambda K E$   
J. B. GASTON,  $K \Lambda$   
W. W. GAYLE,  $\Lambda T Q$   
R. P. McDAVID, JR.,  $\Lambda T Q$   
E. L. McMILLAN,  $\Lambda K E$   
W. H. MERRILL,  $\Phi \Lambda \Theta$   
FRANK MORROW,  $\Phi \Lambda \Theta$   
T. W. PALMER, JR.,  $\Sigma A E$   
DERRILL PRATT,  $\Lambda T Q$   
MERRILL PRATT,  $\Phi \Lambda \Theta$   
CAROL PRINCE,  $\Phi \Lambda \Theta$   
W. H. SPRATT,  $\Lambda T Q$   
EVERETT WILKINSON,  $K E$



The Skulls