

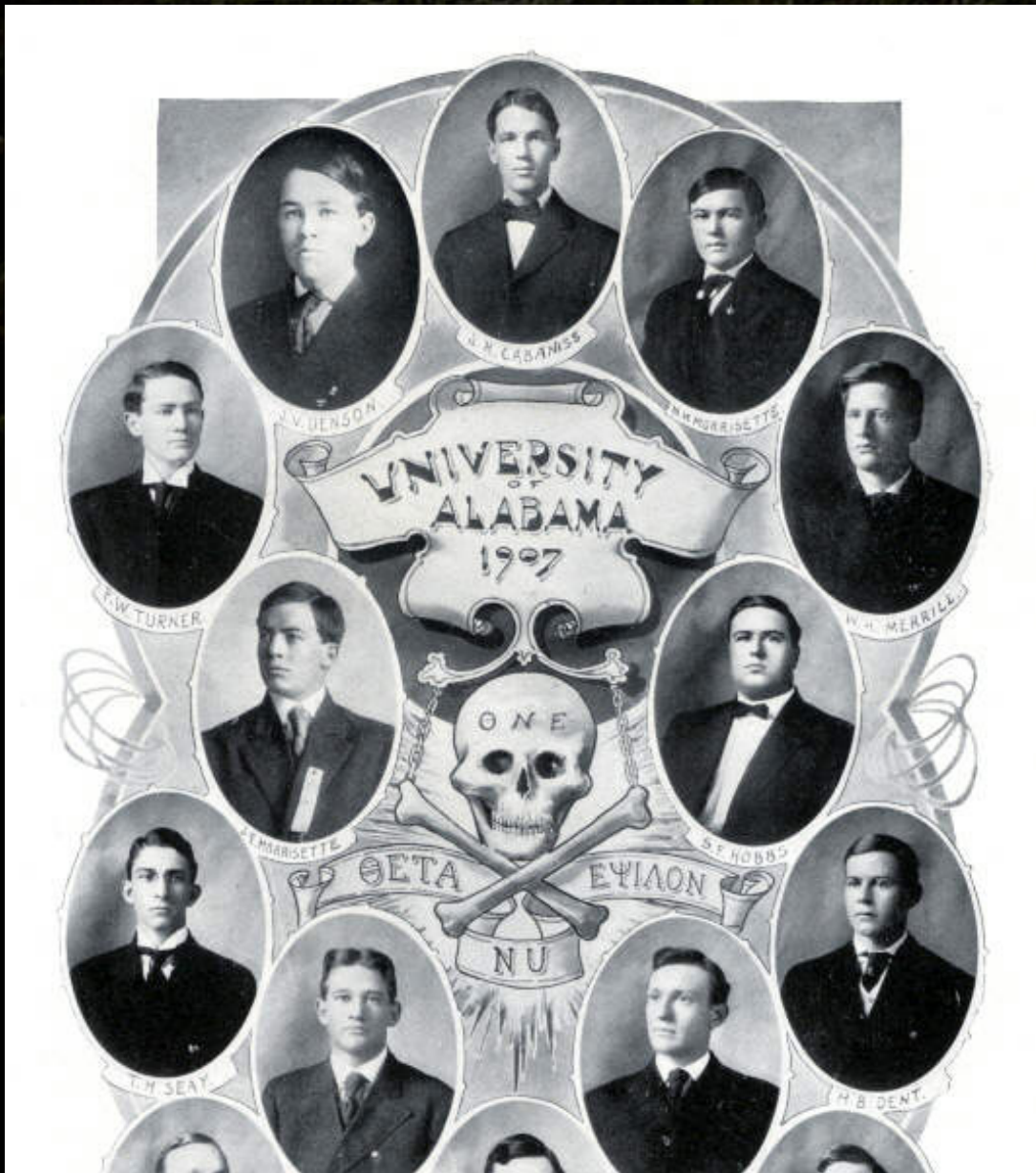
The Theta Nu Epsilon Society.

Alabama - Alpha Rho Chapter.

The Alabama chapter first makes a historical appearance in 1902 when it was made a legitimate chapter by the Alpha at Wesleyan. In all likelihood, the chapter at this time was probably in existence since 1898, but nothing is certain. For some reason, the chapter was reorganized as the 'Skulls' on February 14, 1909, and it reorganized as Theta Nu Epsilon in 1912. Or, the Skulls continued on as a separate organization and a new Theta Nu Epsilon chapter appeared in 1912. Given the current state of our knowledge, either option is possible.

The current chapter at Alabama is distinctive in its operations, but it does represent a route followed by a number of chapters of Theta Nu Epsilon, (especially in the South), and chapters of other class societies unrelated to Theta Nu Epsilon. We have maintained elsewhere that the Alabama - Alpha Rho chapter was once much like the rest of the older chapters. (For an idea of what the Alabama - Alpha Rho chapter was once like, please see the early history of the [North Carolina](#) chapter.)

We also think that the University of Alabama yearbook page makes the same point :





Alpha Rho Chapter, 1907.

The Alabama - Alpha Rho chapter was driven from the national in the 1913 purge, (like all chapters that kept their integrity), and has been independent ever since.

The current chapter is very vital. It has both men and women members, and, as we understand it, functions as something of a mediator between the interests of the fraternities & sororities on campus and the rest of the world. It had the mixed blessing of the focused attention of the national media in a 1992 *Esquire* article. We have reproduced the article [here](#), although without an endorsement of it. Certainly the article had no supporters at the Alabama chapter, as they have made plainly clear.

The Alabama - Alpha Rho chapter was unfortunately also an object of interest of the Louderback national. (See our article on [national organizations](#).) He apparently sought to contact them by going to the campus and passing out flyers on fraternity row of the Alabama campus. He may also have introduced himself to the University administration as the national head of Theta Nu Epsilon. Unfortunately, his exploits coincided with an uptick of interest in the society by *The Crimson White*, and some correspondence ensued. A year after Louderback's death, someone was still posting things to *The Crimson White's* website using his name. A number of members of the Alpha Rho chapter have complained to the Alpha Chapter about Louderback's pretensions.

For a number of years, Louderback regularly created the impression with others that he was the true head of the Alpha Rho chapter. We certainly credit the word of Alpha Rho members that he was not.

The National Organization of the Alpha Chapter of Theta Nu Epsilon, (the originators of this website), is in informal contact with some members of the Alabama chapter, but the two parties are entirely distinct, and no attempt is made here to represent that the Alabama chapter is a part of the National Organization. We emphasize this point to be very clear, and to avoid any confusion.

The National Organization of the Alpha Chapter of Theta Nu Epsilon 1999 - 2004 © All rights reserved.